



AQUASTAR

Always on the
safe side



The original AQUASTAR series by Praher ensures constant and automatic pool filter purification to guarantee optimal hygiene of the pool water. Four decades of expertise in research and production 'made in Austria' stands for the highest quality, safety and durability. Because of the automatic operation, including the backwash operation with a 12–34V DC, 12–230 V AC (50–60 Hz) multi voltage drive (with manual override if required), every pool filter system can be operated both ecologically and economically.

This program is topped of by the wide range of piping sets for installation on the filter (available for all commonly known filter types). The resulting comfort, due to reliability and less stress, leaves more time for a pleasant and healthy enjoyment of the pool.

AQUASTAR

Fully automatic 6-way
backwash valves



easy Cost-efficient fully automatic
6 way back wash valve

comfort The ideal fully automatic solution
for exclusive private pools, which
is also used for public pools and
aquaparks.

safety pack The Revolution in the
Automatic 6-Way
Valve Industry.

BRAND
NEW

*Cost-efficient fully automatic
6 way back wash valve*

Features

- Protection rate IP65
- Both valve and actuator housing UV resistant
- Multi-voltage actuator 12–34 DC, 12–230 V AC (50–60 Hz)
- Position 'circulate' can be used in combination with salt water chlorination
- Potential-free clamps, for operating Praher EO510 electric valves
- Direct pump connection
- Easy adaptation to all commonly used filters by means of a 1 ½" or 2" Ocean side- or top mount valve ABS 3,5 bar including Praher PVC & ABS pipes and unions for quick and easy installation
- Available also with manual override, as optional equipment
- Retrofitting of all manual Praher Ocean V6 side- or top mount valves with new sealing system to all commonly used filters possible

Applications

Swimming pool and spa industry, swimming ponds, aquaristics, trick fountains

AQUASTAR Easy Colour

On minimum orders of 100pcs the color of the lid can be adapted to the filter system and individual brands applied using laser inscription.



AQUASTAR Easy Colour

OPERATING INSTRUCTIONS

*Control options
with the membrane keyboard*



Off
The unit is switched off, regardless of the position it is on



On
The unit is switched on. Valve goes to basic position – 'filter' – a yellow control lamp is illuminated



Testbutton
The backwash cycle is triggered for the period of one backwashing operation (green control lamp is illuminated)



Drain
Sets the valve to position 'waste' (red control lamp is illuminated), content is pumped into the sewer system



Keeping both buttons pressed for 4 seconds sets the valve to position 'circulate'

*Setting of the backwash function
with time switch*

Backwash time (S1)	Rinsing time (S2)	Switching times backwash (S3)
45 sec.	20 sec.	Off
75 sec.	40 sec.	After 3 days
2 min.	1 min.	After 7 days
6 min.	1 ½ min.	After 14 days

→easy 1000, easy 4000, comfort 4000

*Pressure regulation
(0,5–3,5 bar)*



0: 0,5 bar	6: 1,1 bar	C: 2,0 bar
1: 0,6 bar	7: 1,2 bar	D: 2,5 bar
2: 0,7 bar	8: 1,3 bar	E: 3,0 bar
3: 0,8 bar	9: 1,4 bar	F: 3,5 bar
4: 0,9 bar	A: 1,5 bar	
5: 1,0 bar	B: 1,75 bar	

→easy 4000, comfort 4000, comfort 6500

Fully automatic 6 way back wash valve for exclusive private and public pools as well as for aqua parcs.

Features*

- Analog position indication on the actuator lid
- Manual override
- Five Positions can also be controlled with a PCL control (filter, backwash, rinse, waste, circulate)
- Direct pump connection
- Available for Praher Ocean V6 1 1/2", 2" and 3" side mount or top mount valves, ABS 3,5 bar / ASAGF 6 bar
- Connections for EO510 electric ball valve (potential-free)

*Additional advantages in addition to the characteristics of the AQUASTAR easy series (see left).

Applications

Swimming pool and spa industry, water treatment systems, fish farming, trick fountains, cooling towers, water treatment control, carwash



OPERATING INSTRUCTIONS

Additional functions of the membrane keyboard



Manual Circulating pump switches on when position 'filter', 'backwash', 'rinse' or 'waste' is reached (regardless of the time program)



Automatic Only if the filter times are programmed, the circulating pump switches on when position 'filter' is reached

→comfort 6500

Digital clock for programming the backwash time

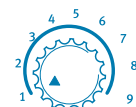


comfort 3000
 Setting of the backwash time for up to six times per day possible (1-channel clock)
 →comfort 3000

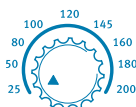


Setting of the backwash time and filter pump operation time (2-channel clock)
 →comfort 6500

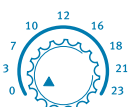
Turn-switch for setting the operating time



Backwash time
 50 sec.–9 min.



Rinse time
 25–200 sec.



Time delay
 20 sec.–23 min.

Conversion to manual operation



Quick conversion without any additional tools and dismantling of the valve from automatic to manual override

1



2



3

The Revolution in the Automatic 6-Way Valve Industry.



Revolutionary, fully automatic 6 way back wash valve for private and public pools as well as for aqua parcs with additional protection in case of power failure.

Cascais Piscinas e Spas

www.
Mergulho Saigado
.com

Telm. 962444011

Features

- No water loss during back wash process in case of power failure
- 5 positions including electric and visual position indication
- Available for all well-known top and side mount filter systems in Europe/ Asia/USA/Africa
- Price advantage in comparison with other back wash valve types (cylinder valve, butterfly valve systems)
- Economic operation with 12-230V AC/DC electric actuator
- Time and/or pressure controlled activation of back wash process
- Optimal flow rates and low pressure loss together with the Praher back wash valve – new sealing system
- Serial connection of several AQUASTARS possible
- Control with external PLC control possible
- Incl. potential free connections for EO510 automatic ball valve control
- IP65 protection code for outdoor application
- 12V, 0,8 Ah accumulator, maintenance free, with capacity for power failure up to 4 times per hour



Safety Pack Ensures Optimal Safe Operation.

In case of power failure, the position "Filter" is automatically activated with the help of a high-quality battery. This means that a malfunction of the backflushing process, such as the complete emptying of the pool water, is virtually impossible.

In case of power failure during the operation of the AQUASTAR the accumulator is activated within three seconds. The valve is automatically switched to position "filter" (a LED display is helpful for identification of the problem).

Power will be cut off after five minutes operation of the accumulator. The valve can be put on operation again when normal power supply is available. During normal operation this also works regardless of valve position or during change of position.

In case of power failure during manual activated circulation or draining process the intended process is finished and will not be changed to position "filter".

Available in 1 1/2" and 2" versions of the 3000, 4000 and 6500 models new or also as assembly set for the latest AQUASTAR models.

	AQUASTAR easy 1000	AQUASTAR easy 4000	AQUASTAR mp	AQUASTAR comfort 3000 + Safety Pack	AQUASTAR comfort 4000 + Safety Pack	AQUASTAR comfort 6500 + Safety Pack	AQUASTAR 5000
Time switch	x	x			x		
Pressure switch		x			x	x	
Digital clock				x		x	x
Filter pump clock						x	x
Manual override	Available as optional equipment		x	x	x	x	x
IP65	x	x	x	x	x	x	x
Multi-Volt drive 12-34 V DC, 12-230 V AC (50-60 Hz)	x	x	24 or 230 V	x	x	x	230-400 V *
Waste, filter, backwash, rinse	x	x	x	x	x	x	x
Circulate	x	x	x	x	x	x	
Closed			x				
Pump connection	x	x	x	x	x	x	x
Potential free connection for electric ball valve E0510	x	x		x	x	x	x
Backwash valve 1½" + 2" **	x	x	x	x	x	x	x
Backwash valve 3" **			x	x	x	x	x

* The AQUASTAR 5000 comes with separate control box.

** OCEAN V6 backwash valve, original Praher side- or top mount, various flanges and piping sets available on request for all commonly known filter types.

Filter sizes	300	350	400	450	500	600	650	750	800	900	950
Adapter	1½"	1½"	1½"	1½"	1½"	1½"	1½"	2"	2"	3"	3"
Recommended AQUASTAR models	easy 1000 easy 4000			comfort 4000 comfort 3000 comfort 6500 5000 mp							



Made in
Austria/Europe.



With consideration for people and nature:
www.greenresponse.at



www.peraqua.com

english



Telm. 962444011

PERAQUA